



URBAN CANVAS

RV2700-Q9-RV1



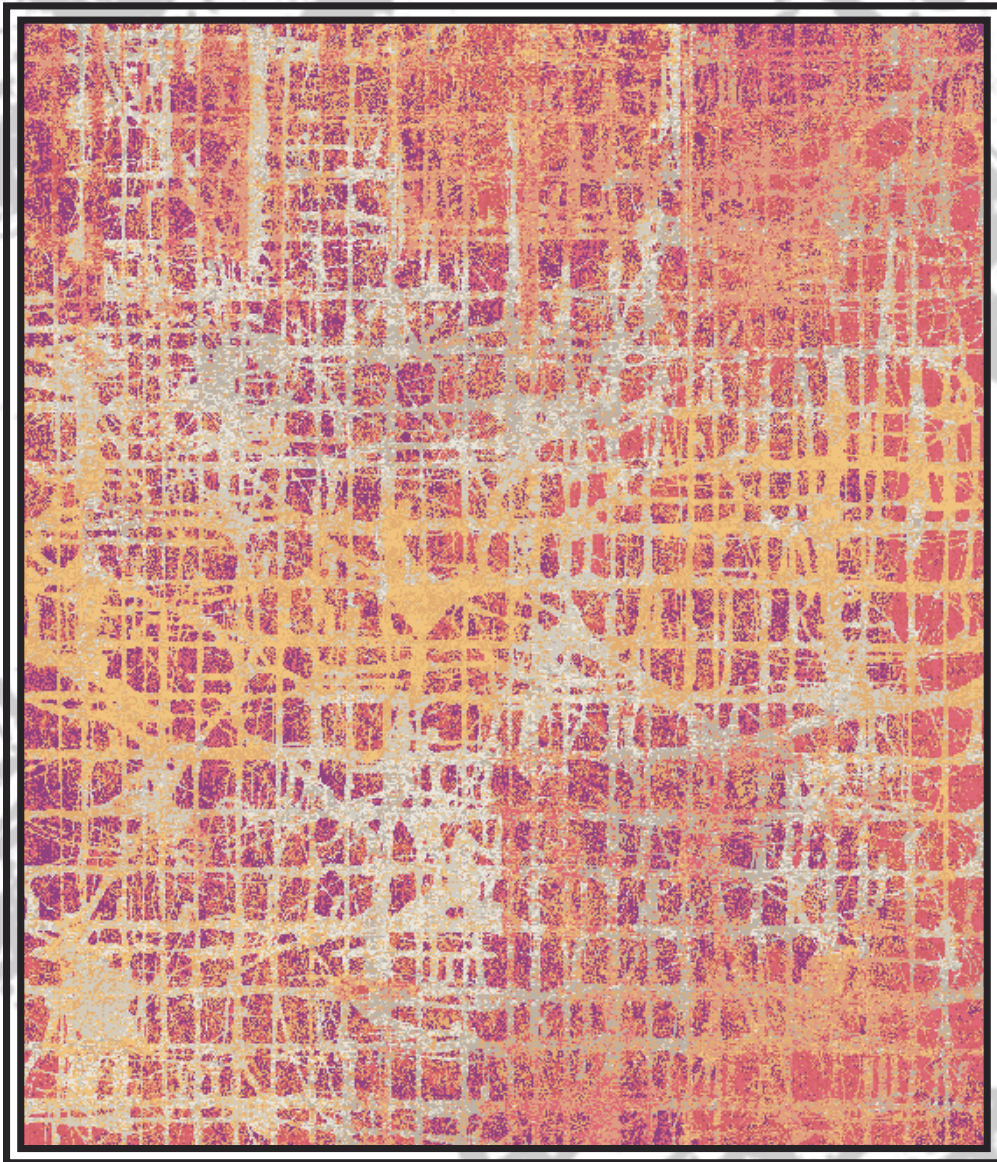
RV2700-Q9-RV1



ML00803-Q9-ML2



ML00822-Q9-ML1



RV2645-Q9-RV2

RV2698-Q9-RV1

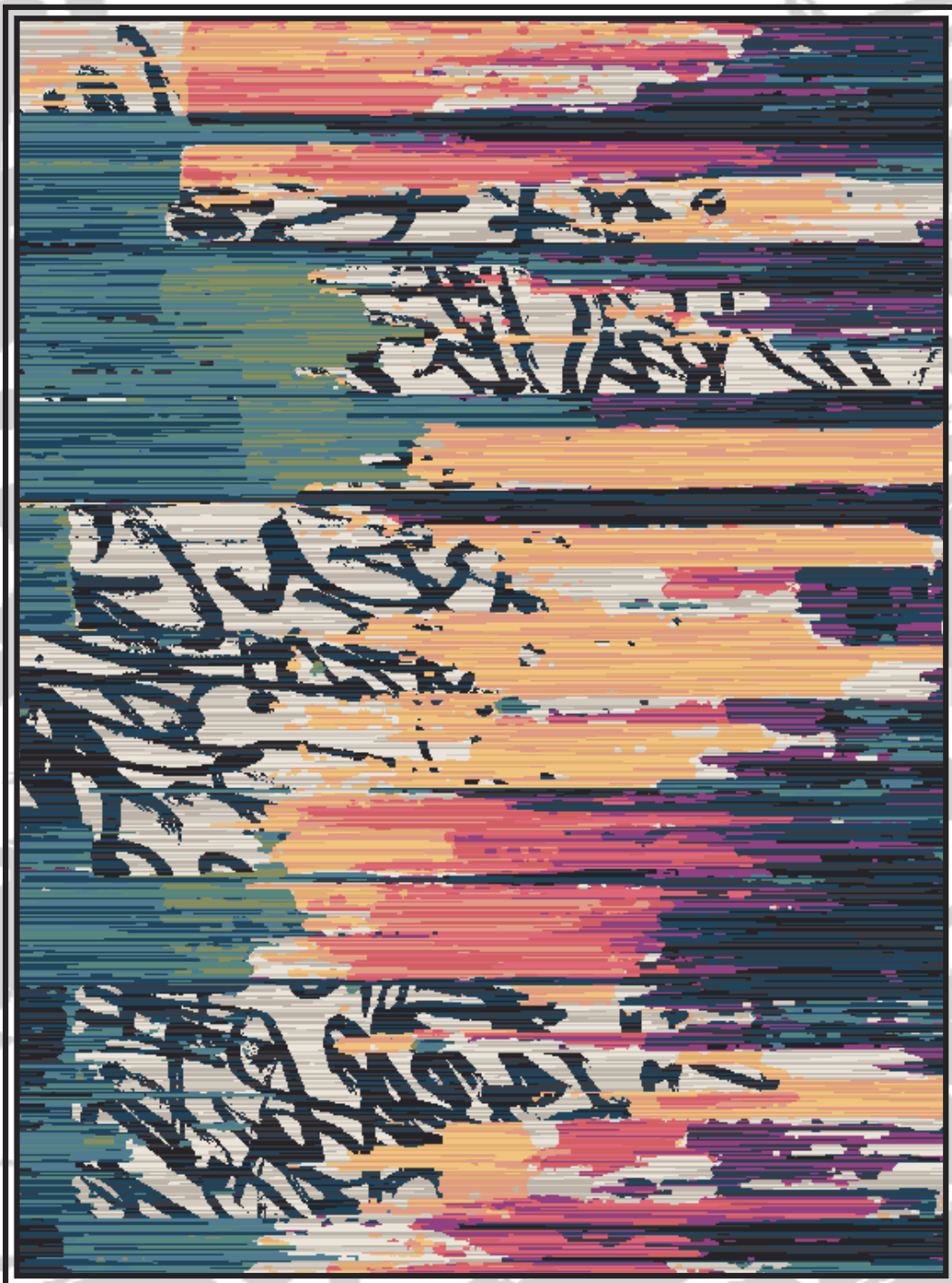


RV2669-Q9-RV1

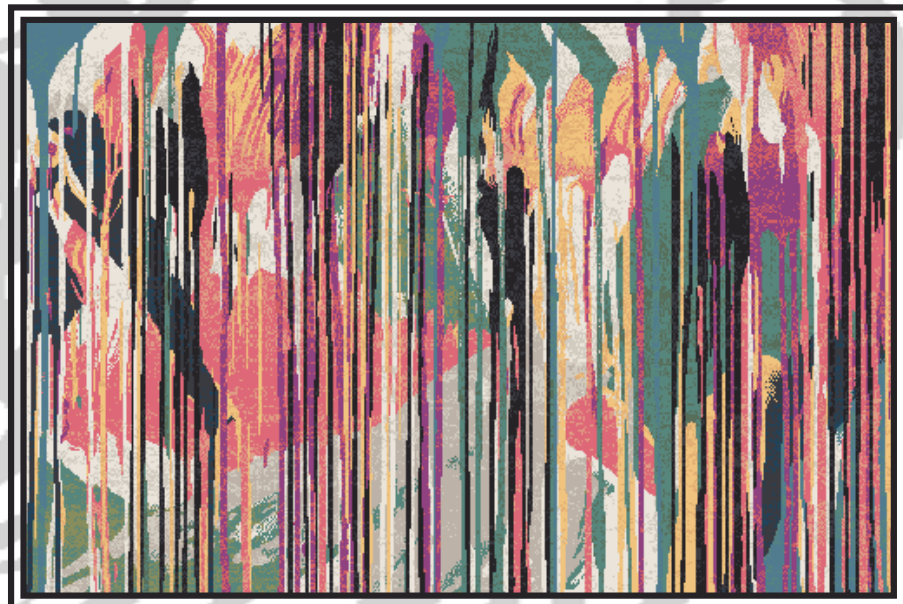


ML00814-Q9-ML1

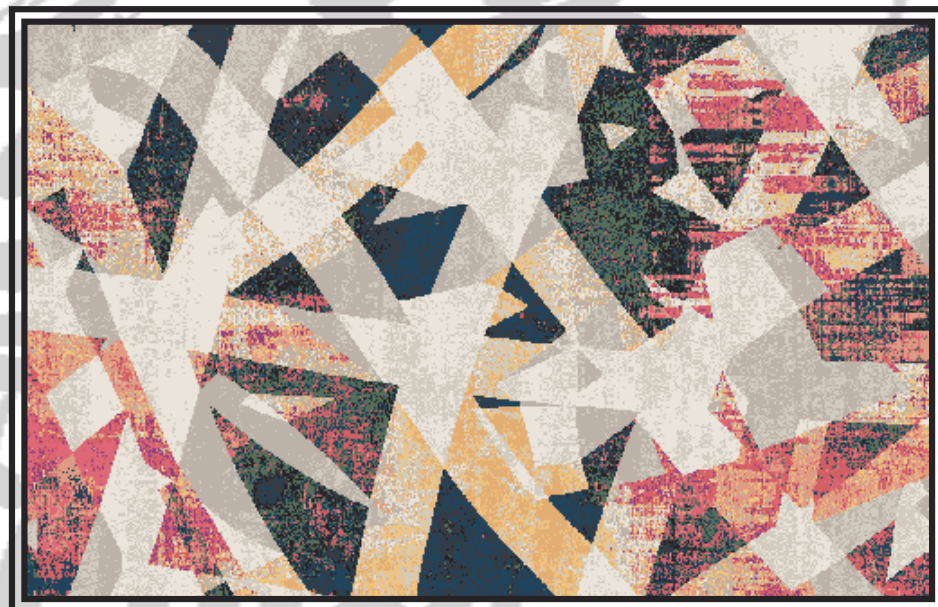




RV2663-Q10-RV1



RV2666-Q10-RV1



RV2659-Q7-RV1



RV2662-Q9-RV1

RV2655-Q9-RV1





ML00818-Q9-ML2

RV2656-Q9-RV1





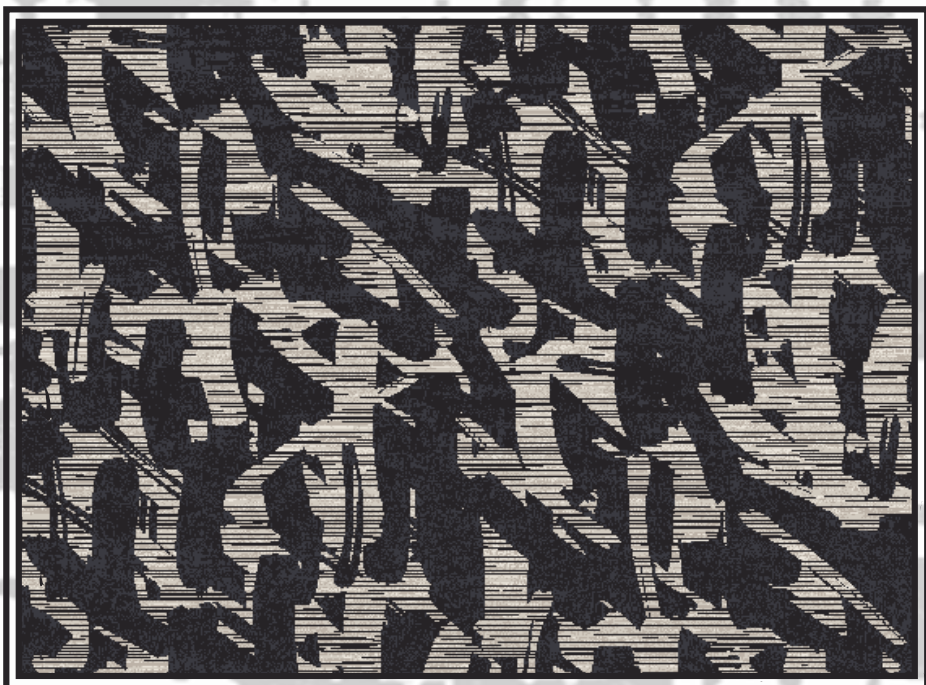
RV2699-Q9-RV1

RV2651-Q9-RV1



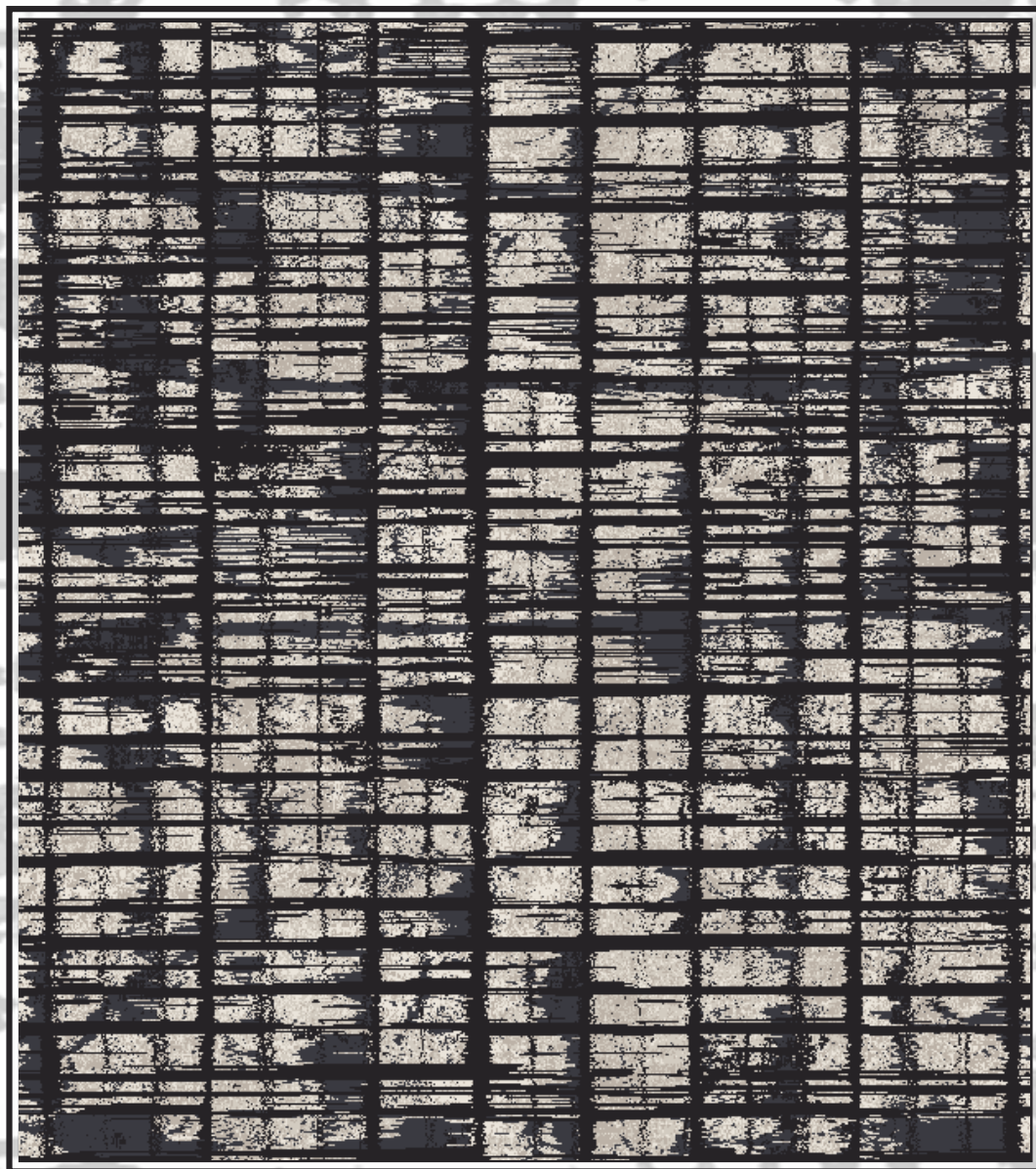


RV2665-Q9-RV1

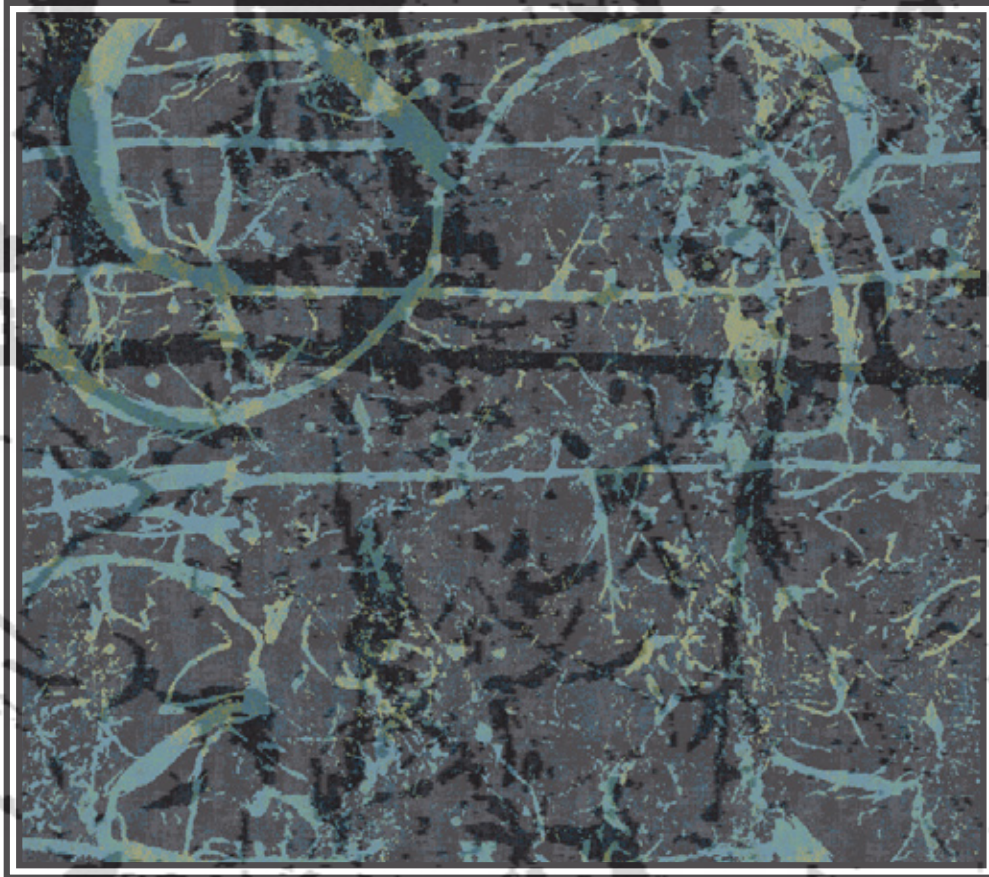


RV2668-Q9-RV1

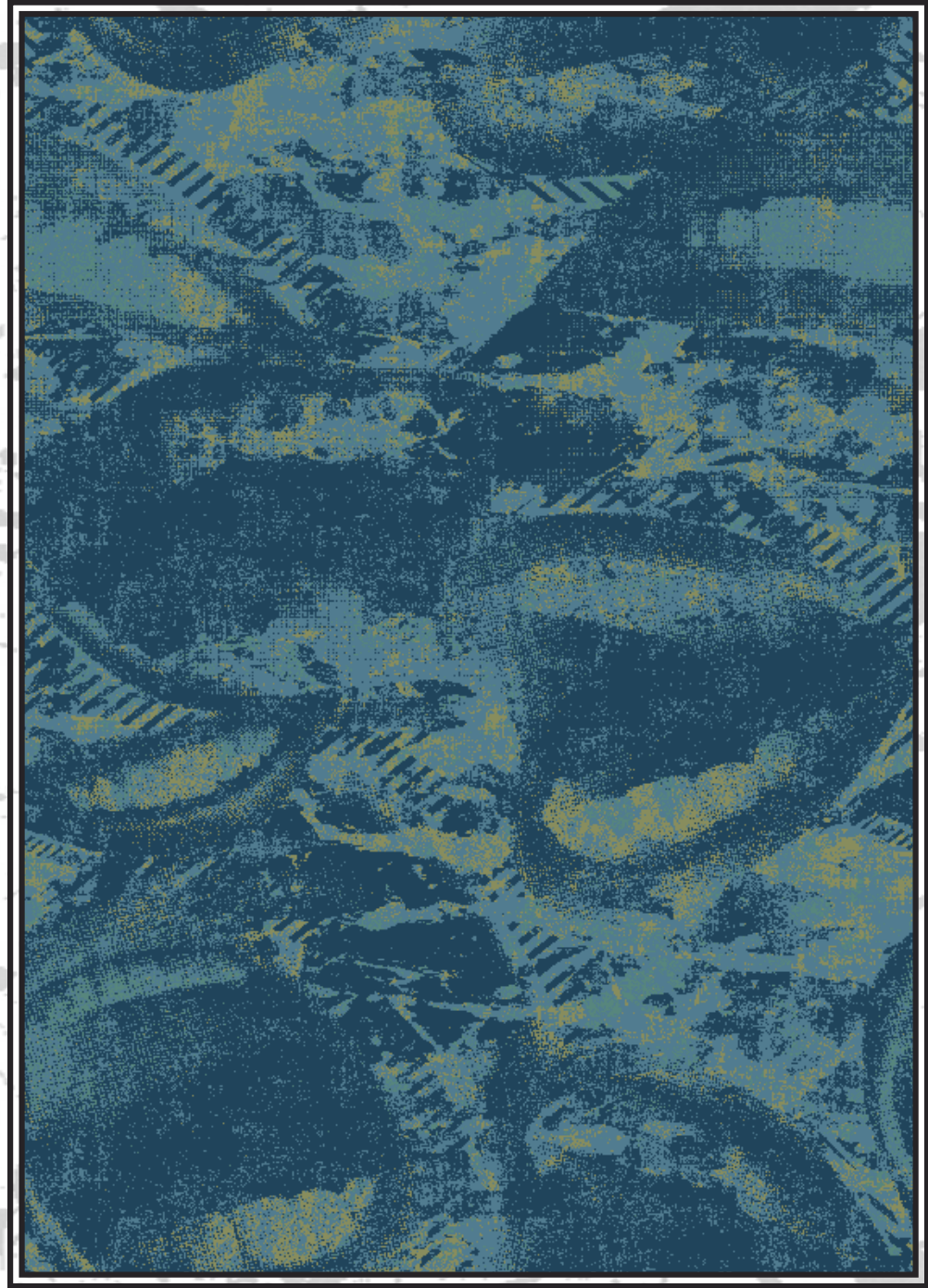
ML00824-Q9-ML2



ML00817-Q9-ML1



ML00802-Q9-ML4



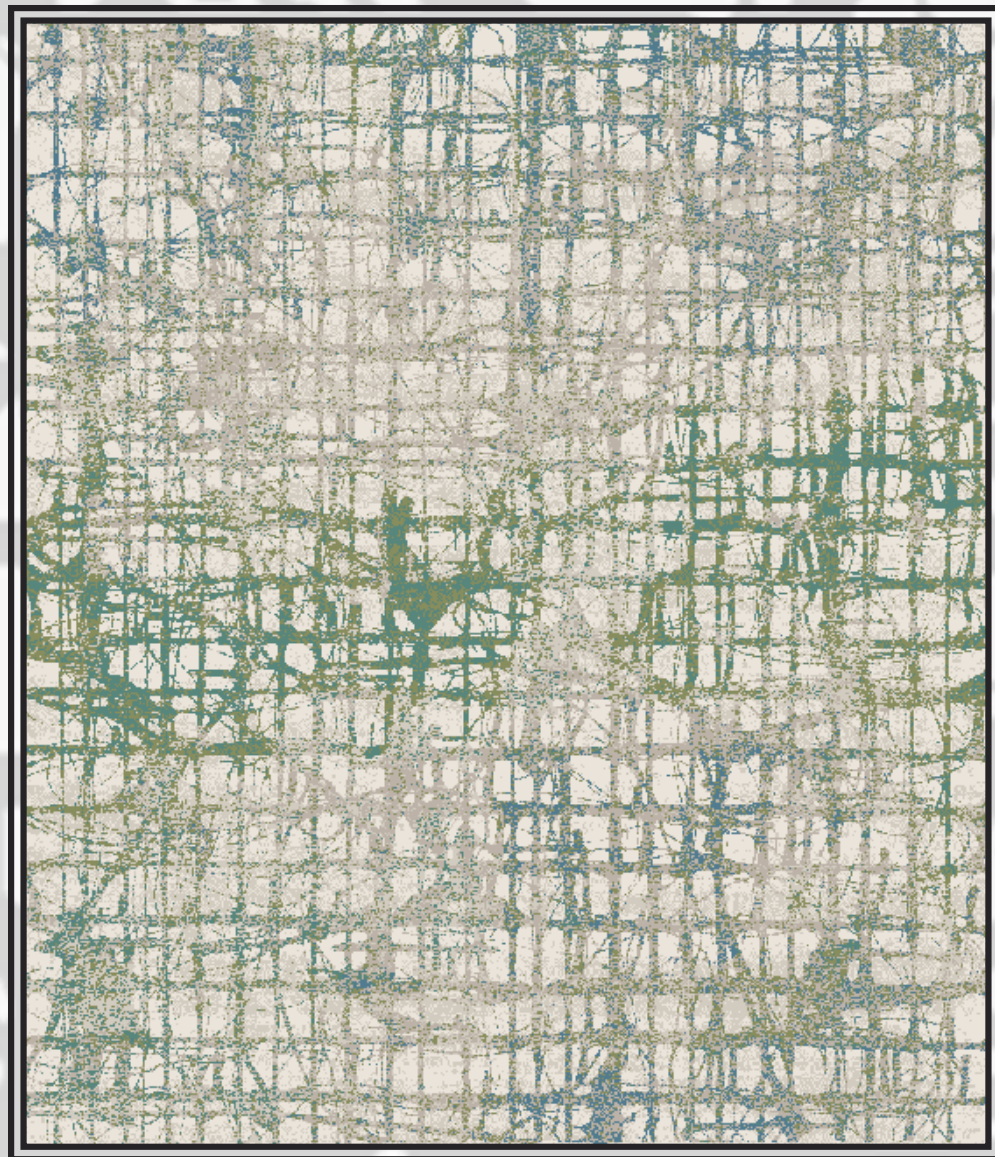
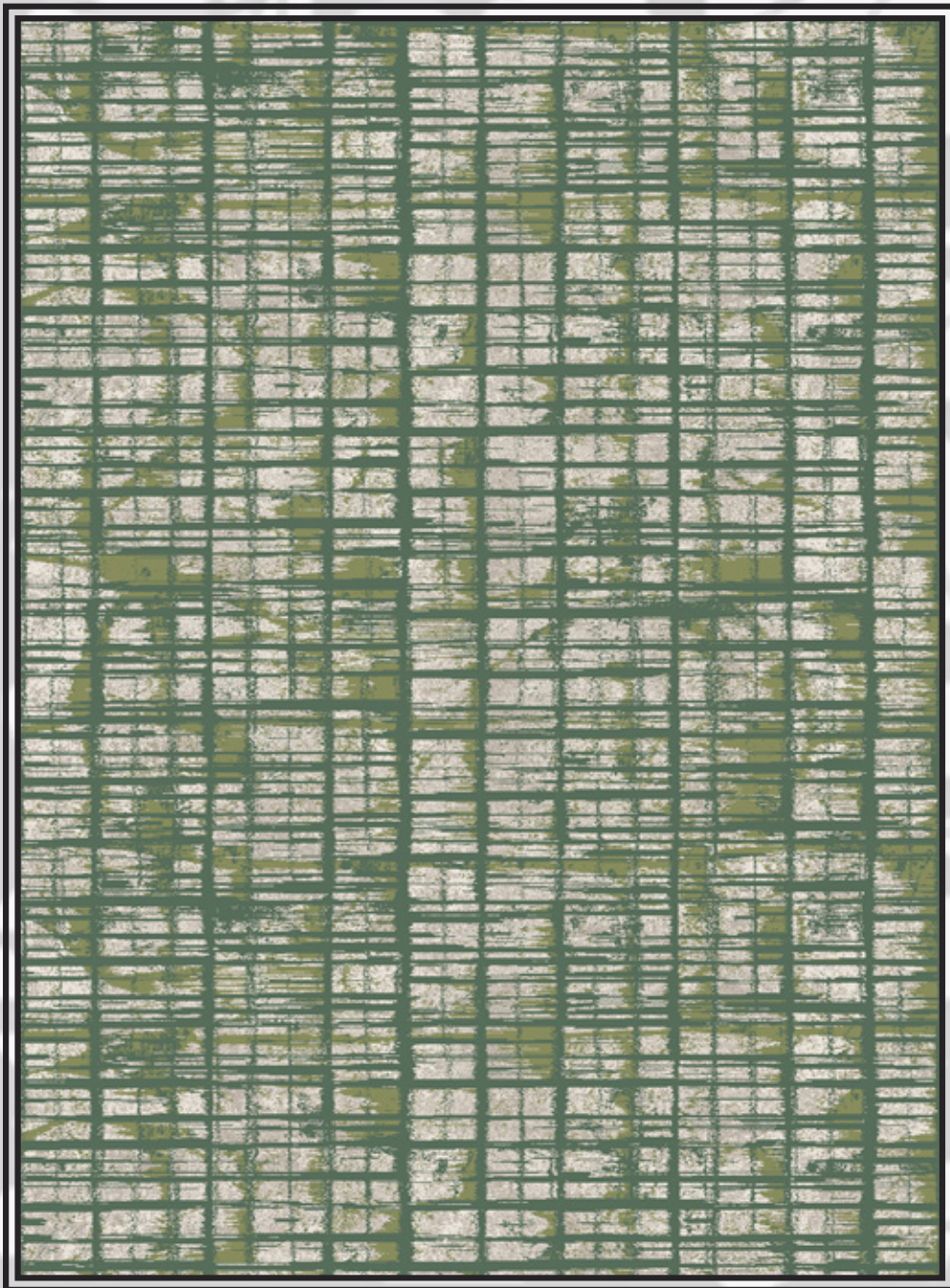
RV2658-Q9-RV1



RV2661-Q10-RV1



ML00824-Q9-ML1



RV2654-Q9-RV1

RV2648-Q9-RV2



RV2670-Q9-RV1



RV2657-Q9-RV1



ML00801-Q9-ML2

The background is a high-contrast, abstract composition of black ink splatters and brushstrokes on a white background. The splatters vary in size and shape, some appearing as solid black circles or irregular blotches, while others are elongated, thin lines or radiating starburst patterns. The overall effect is dynamic and expressive, resembling a splatter-painting technique.

WWW.CROSSLEYAX.COM

Ph:(662)335-5082